

PushOne™

A Series • E Series

Renewed 3 Products

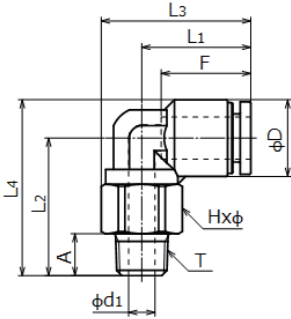


NEW

PushOne™ A Series

90 degree elbow

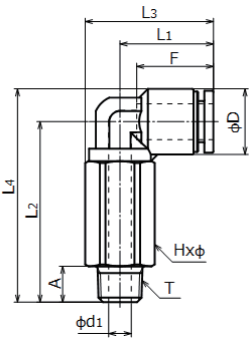
● Millimeter size type



| NEW Product number | Applicable tube outer diameter (mm) | T Thread size (M,R) | L1 (mm) | L2 (mm) | L3 (mm) | L4 (mm) | A (mm) | F Tube insertion length (mm) | Hxφ Width across flat (mm) | D (mm) | d1 (mm) | Min. inner diameter (mm) | Weight (g) |
|--------------------|-------------------------------------|---------------------|---------|---------|---------|---------|--------|------------------------------|----------------------------|--------|---------|--------------------------|------------|
| AL4-M5-Z2 | 4 | M5×0.8 | 17.2 | 18.3 | 22.7 | 23.2 | 4.0 | 13 | 10.0×11.0 | 9.8 | 2.0 | 2.0 | 6.0 |
| AL4-R1/8-Z2 | 4 | R1/8 | 17.2 | 22.7 | 22.7 | 27.6 | 8.0 | 13 | 10.0×11.0 | 9.8 | 5.0 | 3.0 | 10.0 |
| AL4-R1/4-Z2 | 4 | R1/4 | 17.2 | 24.4 | 24.9 | 29.3 | 12.0 | 13 | 14.0×15.4 | 9.8 | 5.0 | 3.0 | 19.0 |
| AL6-M5-Z2 | 6 | M5×0.8 | 18.5 | 22.2 | 25.0 | 28.5 | 4.0 | 15 | 12.0×13.0 | 12.6 | 2.0 | 2.0 | 10.0 |
| AL6-R1/8-Z2 | 6 | R1/8 | 18.5 | 25.2 | 25.0 | 31.5 | 8.0 | 15 | 12.0×13.0 | 12.6 | 5.0 | 5.0 | 12.0 |
| AL6-R1/4-Z2 | 6 | R1/4 | 18.5 | 25.8 | 26.2 | 32.1 | 12.0 | 15 | 14.0×15.4 | 12.6 | 7.0 | 5.0 | 17.0 |
| AL6-R3/8-Z2 | 6 | R3/8 | 18.5 | 26.8 | 27.8 | 33.1 | 12.0 | 15 | 17.0×18.5 | 12.6 | 11.0 | 5.0 | 27.0 |
| AL8-R1/8-Z2 | 8 | R1/8 | 20.7 | 26.2 | 28.4 | 33.5 | 8.0 | 16 | 14.0×15.4 | 14.6 | 5.0 | 5.0 | 16.0 |
| AL8-R1/4-Z2 | 8 | R1/4 | 20.7 | 30.2 | 28.4 | 37.5 | 12.0 | 16 | 14.0×15.4 | 14.6 | 8.0 | 7.0 | 19.0 |
| AL8-R3/8-Z2 | 8 | R3/8 | 20.7 | 27.8 | 30.0 | 35.1 | 12.0 | 16 | 17.0×18.5 | 14.6 | 9.0 | 7.0 | 28.0 |
| AL10-R1/8-Z2 | 10 | R1/8 | 24.7 | 29.2 | 33.9 | 38.0 | 8.0 | 19 | 17.0×18.5 | 17.5 | 5.0 | 5.0 | 23.0 |
| AL10-R1/4-Z2 | 10 | R1/4 | 24.7 | 32.4 | 33.9 | 41.1 | 12.0 | 19 | 17.0×18.5 | 17.5 | 8.0 | 8.0 | 25.0 |
| AL10-R3/8-Z2 | 10 | R3/8 | 24.7 | 34.2 | 33.9 | 43.0 | 12.0 | 19 | 17.0×18.5 | 17.5 | 11.0 | 9.0 | 30.0 |
| AL10-R1/2-Z2 | 10 | R1/2 | 24.7 | 34.3 | 36.9 | 43.0 | 16.0 | 19 | 22.0×24.5 | 17.5 | 12.0 | 9.0 | 53.0 |
| AL12-R1/4-Z2 | 12 | R1/4 | 26.3 | 35.0 | 36.8 | 45.0 | 12.0 | 20 | 19.0×21.0 | 20.0 | 8.0 | 8.0 | 31.0 |
| AL12-R3/8-Z2 | 12 | R3/8 | 26.3 | 33.5 | 36.8 | 43.5 | 12.0 | 20 | 19.0×21.0 | 20.0 | 11.0 | 11.0 | 32.0 |
| AL12-R1/2-Z2 | 12 | R1/2 | 26.3 | 36.5 | 38.6 | 46.5 | 16.0 | 20 | 22.0×24.5 | 20.0 | 12.0 | 11.0 | 53.0 |

90 degree long elbow

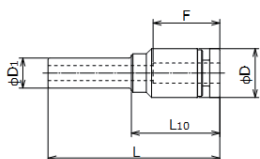
● Millimeter size type



| NEW Product number | Applicable tube outer diameter (mm) | T Thread size (M,R) | L1 (mm) | L2 (mm) | L3 (mm) | L4 (mm) | A (mm) | F Tube insertion length (mm) | Hxφ Width across flat (mm) | D (mm) | d1 (mm) | Min. inner diameter (mm) | Weight (g) |
|--------------------|-------------------------------------|---------------------|---------|---------|---------|---------|--------|------------------------------|----------------------------|--------|---------|--------------------------|------------|
| ALL4-M5-Z2 | 4 | M5×0.8 | 17.2 | 29.9 | 22.7 | 34.8 | 4.0 | 13 | 10.0×11.0 | 9.8 | 2.0 | 2.0 | 14.0 |
| ALL4-R1/8-Z2 | 4 | R1/8 | 17.2 | 32.4 | 22.7 | 37.3 | 8.0 | 13 | 10.0×11.0 | 9.8 | 5.0 | 3.0 | 15.0 |
| ALL4-R1/4-Z2 | 4 | R1/4 | 17.2 | 36.4 | 24.9 | 41.3 | 12.0 | 13 | 14.0×15.4 | 9.8 | 5.0 | 3.0 | 34.0 |
| ALL6-M5-Z2 | 6 | M5×0.8 | 18.5 | 34.7 | 25.0 | 41.0 | 4.0 | 15 | 12.0×13.0 | 12.6 | 2.0 | 2.0 | 23.0 |
| ALL6-R1/8-Z2 | 6 | R1/8 | 18.5 | 37.2 | 25.0 | 43.5 | 8.0 | 15 | 12.0×13.0 | 12.6 | 5.0 | 5.0 | 23.0 |
| ALL6-R1/4-Z2 | 6 | R1/4 | 18.5 | 41.2 | 26.2 | 47.5 | 12.0 | 15 | 14.0×15.4 | 12.6 | 7.0 | 5.0 | 34.0 |
| ALL6-R3/8-Z2 | 6 | R3/8 | 18.5 | 42.2 | 27.8 | 48.5 | 12.0 | 15 | 17.0×18.5 | 12.6 | 11.0 | 5.0 | 54.0 |
| ALL8-R1/8-Z2 | 8 | R1/8 | 20.7 | 40.2 | 28.4 | 47.5 | 8.0 | 16 | 14.0×15.4 | 14.6 | 5.0 | 5.0 | 33.0 |
| ALL8-R1/4-Z2 | 8 | R1/4 | 20.7 | 44.2 | 28.4 | 51.5 | 12.0 | 16 | 14.0×15.4 | 14.6 | 8.0 | 7.0 | 33.0 |
| ALL8-R3/8-Z2 | 8 | R3/8 | 20.7 | 45.2 | 30.0 | 52.5 | 12.0 | 16 | 17.0×18.5 | 14.6 | 9.0 | 7.0 | 55.0 |
| ALL10-R1/8-Z2 | 10 | R1/8 | 24.7 | 46.2 | 33.9 | 55.0 | 8.0 | 19 | 17.0×18.5 | 17.5 | 5.0 | 5.0 | 55.0 |
| ALL10-R1/4-Z2 | 10 | R1/4 | 24.7 | 50.2 | 33.9 | 59.0 | 12.0 | 19 | 17.0×18.5 | 17.5 | 8.0 | 8.0 | 55.0 |
| ALL10-R3/8-Z2 | 10 | R3/8 | 24.7 | 51.2 | 33.9 | 60.0 | 12.0 | 19 | 17.0×18.5 | 17.5 | 11.0 | 9.0 | 52.0 |
| ALL10-R1/2-Z2 | 10 | R1/2 | 24.7 | 55.2 | 36.9 | 64.0 | 16.0 | 19 | 22.0×24.5 | 17.5 | 12.0 | 9.0 | 106.0 |
| ALL12-R1/4-Z2 | 12 | R1/4 | 26.3 | 55.2 | 36.8 | 65.2 | 12.0 | 20 | 19.0×21.0 | 20.0 | 8.0 | 8.0 | 75.0 |
| ALL12-R3/8-Z2 | 12 | R3/8 | 26.3 | 56.2 | 36.8 | 66.2 | 12.0 | 20 | 19.0×21.0 | 20.0 | 11.0 | 11.0 | 73.0 |
| ALL12-R1/2-Z2 | 12 | R1/2 | 26.3 | 60.2 | 38.6 | 70.2 | 16.0 | 20 | 22.0×24.5 | 20.0 | 12.0 | 11.0 | 114.0 |

Reducer

● Millimeter size type

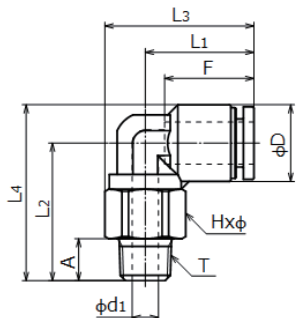


| NEW Product number | Applicable tube outer diameter (mm) | D1 Insertion part diameter (mm) | L (mm) | L10 (mm) | F Tube insertion length (mm) | D (mm) | Min. inner diameter (mm) | Weight (g) |
|--------------------|-------------------------------------|---------------------------------|--------|----------|------------------------------|--------|--------------------------|------------|
| AR4-6-Z2 | 4 | 6 | 34.0 | 17.5 | 13 | 9.8 | 3.0 | 3.0 |
| AR4-8-Z2 | 4 | 8 | 31.5 | 18.5 | 13 | 9.8 | 3.0 | 3.0 |
| AR6-8-Z2 | 6 | 8 | 34.3 | 17.3 | 15 | 12.6 | 5.0 | 4.0 |
| AR6-10-Z2 | 6 | 10 | 35.2 | 20.2 | 15 | 12.6 | 5.0 | 4.0 |
| AR6-12-Z2 | 6 | 12 | 36.7 | 20.9 | 15 | 12.6 | 5.0 | 5.0 |
| AR8-10-Z2 | 8 | 10 | 39.0 | 18.5 | 16 | 14.6 | 7.0 | 5.0 |
| AR8-12-Z2 | 8 | 12 | 37.9 | 15.8 | 16 | 14.6 | 7.0 | 5.0 |
| AR10-12-Z2 | 10 | 12 | 42.5 | 20.5 | 19 | 17.5 | 9.0 | 8.0 |

PushOne™ E Series

90 degree elbow

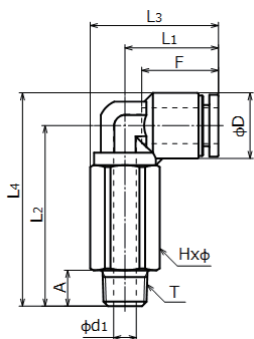
● Millimeter size type



| NEW Product number | Applicable tube outer diameter (mm) | T Thread size (M,R) | L1 (mm) | L2 (mm) | L3 (mm) | L4 (mm) | A (mm) | F Tube insertion length (mm) | Hxφ Width across flat (mm) | D (mm) | d1 (mm) | Min. inner diameter (mm) | Weight (g) |
|--------------------|-------------------------------------|---------------------|---------|---------|---------|---------|--------|------------------------------|----------------------------|--------|---------|--------------------------|------------|
| EL4-M5-Z2 | 4 | M5×0.8 | 17.2 | 18.3 | 22.7 | 23.2 | 4.0 | 13 | 10.0×11.0 | 9.8 | 2.0 | 2.0 | 6.0 |
| EL4-PT1/8-Z2 | 4 | R1/8 | 17.2 | 22.7 | 22.7 | 27.6 | 8.0 | 13 | 10.0×11.0 | 9.8 | 5.0 | 3.0 | 10.0 |
| EL4-PT1/4-Z2 | 4 | R1/4 | 17.2 | 24.4 | 24.9 | 29.3 | 12.0 | 13 | 14.0×15.4 | 9.8 | 5.0 | 3.0 | 19.0 |
| EL6-M5-Z2 | 6 | M5×0.8 | 18.5 | 22.2 | 25.0 | 28.5 | 4.0 | 15 | 12.0×13.0 | 12.6 | 2.0 | 2.0 | 10.0 |
| EL6-PT1/8-Z2 | 6 | R1/8 | 18.5 | 25.2 | 25.0 | 31.5 | 8.0 | 15 | 12.0×13.0 | 12.6 | 5.0 | 5.0 | 12.0 |
| EL6-PT1/4-Z2 | 6 | R1/4 | 18.5 | 25.8 | 26.2 | 32.1 | 12.0 | 15 | 14.0×15.4 | 12.6 | 7.0 | 5.0 | 17.0 |
| EL6-PT3/8-Z2 | 6 | R3/8 | 18.5 | 26.8 | 27.8 | 33.1 | 12.0 | 15 | 17.0×18.5 | 12.6 | 11.0 | 5.0 | 27.0 |
| EL8-PT1/8-Z2 | 8 | R1/8 | 20.7 | 26.2 | 28.4 | 33.5 | 8.0 | 16 | 14.0×15.4 | 14.6 | 5.0 | 5.0 | 16.0 |
| EL8-PT1/4-Z2 | 8 | R1/4 | 20.7 | 30.2 | 28.4 | 37.5 | 12.0 | 16 | 14.0×15.4 | 14.6 | 8.0 | 7.0 | 19.0 |
| EL8-PT3/8-Z2 | 8 | R3/8 | 20.7 | 27.8 | 30.0 | 35.1 | 12.0 | 16 | 17.0×18.5 | 14.6 | 9.0 | 7.0 | 28.0 |
| EL10-PT1/8-Z2 | 10 | R1/8 | 24.7 | 29.2 | 33.9 | 38.0 | 8.0 | 19 | 17.0×18.5 | 17.5 | 5.0 | 5.0 | 23.0 |
| EL10-PT1/4-Z2 | 10 | R1/4 | 24.7 | 32.4 | 33.9 | 41.1 | 12.0 | 19 | 17.0×18.5 | 17.5 | 8.0 | 8.0 | 25.0 |
| EL10-PT3/8-Z2 | 10 | R3/8 | 24.7 | 34.2 | 33.9 | 43.0 | 12.0 | 19 | 17.0×18.5 | 17.5 | 11.0 | 9.0 | 30.0 |
| EL10-PT1/2-Z2 | 10 | R1/2 | 24.7 | 34.3 | 36.9 | 43.0 | 16.0 | 19 | 22.0×24.5 | 17.5 | 12.0 | 9.0 | 53.0 |
| EL12-PT1/4-Z2 | 12 | R1/4 | 26.3 | 35.0 | 36.8 | 45.0 | 12.0 | 20 | 19.0×21.0 | 20.0 | 8.0 | 8.0 | 31.0 |
| EL12-PT3/8-Z2 | 12 | R3/8 | 26.3 | 33.5 | 36.8 | 43.5 | 12.0 | 20 | 19.0×21.0 | 20.0 | 11.0 | 11.0 | 32.0 |
| EL12-PT1/2-Z2 | 12 | R1/2 | 26.3 | 36.5 | 38.6 | 46.5 | 16.0 | 20 | 22.0×24.5 | 20.0 | 12.0 | 11.0 | 53.0 |

90 degree long elbow

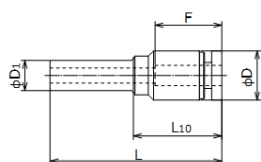
● Millimeter size type



| NEW Product number | Applicable tube outer diameter (mm) | T Thread size (M,R) | L1 (mm) | L2 (mm) | L3 (mm) | L4 (mm) | A (mm) | F Tube insertion length (mm) | Hxφ Width across flat (mm) | D (mm) | d1 (mm) | Min. inner diameter (mm) | Weight (g) |
|--------------------|-------------------------------------|---------------------|---------|---------|---------|---------|--------|------------------------------|----------------------------|--------|---------|--------------------------|------------|
| ELL4-M5-Z2 | 4 | M5×0.8 | 17.2 | 29.9 | 22.7 | 34.8 | 4.0 | 13 | 10.0×11.0 | 9.8 | 2.0 | 2.0 | 14.0 |
| ELL4-PT1/8-Z2 | 4 | R1/8 | 17.2 | 32.4 | 22.7 | 37.3 | 8.0 | 13 | 10.0×11.0 | 9.8 | 5.0 | 3.0 | 15.0 |
| ELL4-PT1/4-Z2 | 4 | R1/4 | 17.2 | 36.4 | 24.9 | 41.3 | 12.0 | 13 | 14.0×15.4 | 9.8 | 5.0 | 3.0 | 34.0 |
| ELL6-M5-Z2 | 6 | M5×0.8 | 18.5 | 34.7 | 25.0 | 41.0 | 4.0 | 15 | 12.0×13.0 | 12.6 | 2.0 | 2.0 | 23.0 |
| ELL6-PT1/8-Z2 | 6 | R1/8 | 18.5 | 37.2 | 25.0 | 43.5 | 8.0 | 15 | 12.0×13.0 | 12.6 | 5.0 | 5.0 | 23.0 |
| ELL6-PT1/4-Z2 | 6 | R1/4 | 18.5 | 41.2 | 26.2 | 47.5 | 12.0 | 15 | 14.0×15.4 | 12.6 | 7.0 | 5.0 | 34.0 |
| ELL6-PT3/8-Z2 | 6 | R3/8 | 18.5 | 42.2 | 27.8 | 48.5 | 12.0 | 15 | 17.0×18.5 | 12.6 | 11.0 | 5.0 | 54.0 |
| ELL8-PT1/8-Z2 | 8 | R1/8 | 20.7 | 40.2 | 28.4 | 47.5 | 8.0 | 16 | 14.0×15.4 | 14.6 | 5.0 | 5.0 | 33.0 |
| ELL8-PT1/4-Z2 | 8 | R1/4 | 20.7 | 44.2 | 28.4 | 51.5 | 12.0 | 16 | 14.0×15.4 | 14.6 | 8.0 | 7.0 | 33.0 |
| ELL8-PT3/8-Z2 | 8 | R3/8 | 20.7 | 45.2 | 30.0 | 52.5 | 12.0 | 16 | 17.0×18.5 | 14.6 | 9.0 | 7.0 | 55.0 |
| ELL10-PT1/8-Z2 | 10 | R1/8 | 24.7 | 46.2 | 33.9 | 55.0 | 8.0 | 19 | 17.0×18.5 | 17.5 | 5.0 | 5.0 | 55.0 |
| ELL10-PT1/4-Z2 | 10 | R1/4 | 24.7 | 50.2 | 33.9 | 59.0 | 12.0 | 19 | 17.0×18.5 | 17.5 | 8.0 | 8.0 | 55.0 |
| ELL10-PT3/8-Z2 | 10 | R3/8 | 24.7 | 51.2 | 33.9 | 60.0 | 12.0 | 19 | 17.0×18.5 | 17.5 | 11.0 | 9.0 | 52.0 |
| ELL10-PT1/2-Z2 | 10 | R1/2 | 24.7 | 55.2 | 36.9 | 64.0 | 16.0 | 19 | 22.0×24.5 | 17.5 | 12.0 | 9.0 | 106.0 |
| ELL12-PT1/4-Z2 | 12 | R1/4 | 26.3 | 55.2 | 36.8 | 65.2 | 12.0 | 20 | 19.0×21.0 | 20.0 | 8.0 | 8.0 | 75.0 |
| ELL12-PT3/8-Z2 | 12 | R3/8 | 26.3 | 56.2 | 36.8 | 66.2 | 12.0 | 20 | 19.0×21.0 | 20.0 | 11.0 | 11.0 | 73.0 |
| ELL12-PT1/2-Z2 | 12 | R1/2 | 26.3 | 60.2 | 38.6 | 70.2 | 16.0 | 20 | 22.0×24.5 | 20.0 | 12.0 | 11.0 | 114.0 |

Reducer

● Millimeter size type



| NEW Product number | Applicable tube outer diameter (mm) | D1 Insertion part diameter (mm) | L (mm) | L10 (mm) | F Tube insertion length (mm) | D (mm) | Min. inner diameter (mm) | Weight (g) |
|--------------------|-------------------------------------|---------------------------------|--------|----------|------------------------------|--------|--------------------------|------------|
| ER4-6-Z2 | 4 | 6 | 34.0 | 17.5 | 13 | 9.8 | 3.0 | 3.0 |
| ER4-8-Z2 | 4 | 8 | 31.5 | 18.5 | 13 | 9.8 | 3.0 | 3.0 |
| ER6-8-Z2 | 6 | 8 | 34.3 | 17.3 | 15 | 12.6 | 5.0 | 4.0 |
| ER6-10-Z2 | 6 | 10 | 35.2 | 20.2 | 15 | 12.6 | 5.0 | 4.0 |
| ER6-12-Z2 | 6 | 12 | 36.7 | 20.9 | 15 | 12.6 | 5.0 | 5.0 |
| ER8-10-Z2 | 8 | 10 | 39.0 | 18.5 | 16 | 14.6 | 7.0 | 5.0 |
| ER8-12-Z2 | 8 | 12 | 37.9 | 15.8 | 16 | 14.6 | 7.0 | 5.0 |
| ER10-12-Z2 | 10 | 12 | 42.5 | 20.5 | 19 | 17.5 | 9.0 | 8.0 |



※There is no change in the following numbered products.
AL6-M6,AL16-R3/8,AL16-R1/2,EL6-M6,EL16-PT3/8,EL16-PT1/2.

NITTA CORPORATION

www.nitta.co.jp

4-4-26 Sakuragawa Naniwa-ku, Osaka 556-0022 Japan Phone: +81-6-6563-1241 • Fax: +81-6-6563-1243

NITTA CORPORATION OF AMERICA

7605 Nitta Drive,
Suwanee, GA 30024, U.S.A
Phone: +1-770-497-0212 • Fax: +1-770-623-1398
www.nitta.com

NITTA (SHANGHAI) MANAGEMENT CO.,LTD.

Room 2705, Shenggao International Building,
No.137 Xianxia Road, Changning District, Shanghai 200051, China
Phone: +86-21-6229-6000 • Fax: +86-21-6229-9606

TAIWAN NITTA FILTER CO.,LTD.

Chia Hsin Building, 10FL, Room No.1005
96 Chung Shan North Road Section 2
Taipei, Taiwan, R.O.C.
Phone: +886-2-2581-6296 • Fax: +886-2-2563-4900
www.nitta.com.tw

NITTA INDUSTRIES EUROPE GmbH

Hansaallee 201,
40549 Düsseldorf, Germany
Phone: +49-211-537535-0 • Fax: +49-211-537535-35
www.nitta.de

NITTA CORPORATION (THAI LAND) LIMITED

7/472 Moo6, Tambol Mabyangporn,
Amphur Pluadaeng, Rayong Province 21140, THAILAND
Phone: +66-38-018-301 • Fax: +66-38-018-304
www.nittathai.com

NITTA CORPORATION INDIA PVT. LTD.

Gat No.191, 192, and 193, Plot No B, Village Vadhu Khurd,
Taluka Haveli Dist Pune-412216, INDIA
Phone: +91-20-6731-3400 • Fax: +91-20-6731-3401
www.nitta.co.in